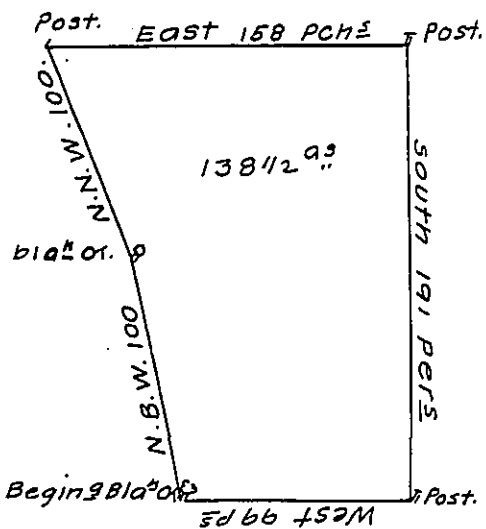


Willm. Branson's Land

Wm. Davis's  
Land  
patented to  
Willm. Thomas



Wm. Branson's  
Land

Wm. Branson's

A Draught of a Tract of Land situate in Nantmel Township Chester  
County containing 13842 93 & allow<sup>d</sup> Survey'd for Samuel Flower, Richard  
Hockley & Lyn Ford Lardner in pursuance of an Order bearing Date  
the 27<sup>th</sup> day of Nov<sup>r</sup> 1751.

Geo. Stevenson

IN TESTIMONY that the above is a copy of the original remaining on file in  
the Department of Internal Affairs of Pennsylvania, made  
conformably to an Act of Assembly approved the 16th day of  
February, 1833, I have hereunto set my Hand and caused  
the Seal of said Department to be affixed at Harrisburg,  
this eightth day of November, 1907.

*Henry Howell*  
Secretary of Internal Affairs.